



ENGLISH EDITION

*Parque Natural de la*  
**SERRANÍA  
DE CUENCA**

**VISITOR'S GUIDE**

*Comenzar*



**naturalea**

CASTILLA-LA MANCHA



Edition: Consejería de Desarrollo Sostenible,  
Junta de Comunidades de Castilla-La Mancha.

Design and Layout: IMP Comunicación

Printing: Quinta impresión

Photography: AM: Atanasio Mora / CD: Cecilia Díaz / DB: David Blázquez  
/ FGP: Fernando García Porras / JAG José A. Gil / JLS: Juan Luis Serrano  
/ JAGR: José A. García-Redondo / MVP: María del Val Pérez  
/ OGC: Óscar García Cardo / PG: Pedro García / TA: Tasón

Legal Deposit: TO-200-2023

Translation: get brit!

# C O N T E N T S

## **NATURAL VALUES**

• Landscape.....	4
• Flora and vegetation.....	8
• Wildlife.....	12
• Geology and geomorphology.....	16
• Human activity in the Serranía de Cuenca.....	18

## **NATURALEA LA SERRANÍA DE CUENCA**

• Learn more and start your visit.....	20
--	----

### **Explore the park**

• Hiking routes.....	24
• Easy trails.....	24
• Intermediate trails.....	25
• Moderate trails.....	26
• Long-distance trails.....	27
• Cycling routes.....	28
• Picnic areas.....	29
• Shelters.....	29
• Resources and places of interest.....	30
• Architectural and ethnographic resources.....	36

## **REGULATION OF PUBLIC USE AND SPORTS ACTIVITIES**

<b>IN THE NATURAL PARK.....</b>	<b>37</b>
---------------------------------	-----------

<b>SAFETY, RULES AND RECOMMENDATIONS.....</b>	<b>40</b>
---	-----------



Uña lagoon / TA

# *Parque Natural de la* **SERRANÍA DE CUENCA**

•The Serranía de Cuenca Natural Park is located in the northeast of the province, forming part of the Southern Iberian System, including a large part of the Serranía Alta region. The protection of this space recognizes the importance of its forest masses, especially pine forests, its floristic, geological, geomorphological, and faunal diversity. Its location in the southernmost mountainous core of the Iberian System, separating the hydrographic slopes of the Atlantic and Mediterranean facades, gives it a high biogeographical value.

The area relief is dominated by high moorland or “muelas” on which the effects of karst modeling can be appreciated, such as lapiaces and ruiniform reliefs locally known as tormagales or enchanted cities, with excellent representations like the Enchanted City of Valdecabras and Los Callejones de Las Majadas. Endokarst is also widely represented, with numerous caves and chasms of great importance for speleology.

These high plateaus are separated by the “wounds” that time has generated as a result of the numerous watercourses, forming spectacular gorges and river canyons delimited by rocky cliffs of great spectacularity.



# N A T U R A L   V A L U E S



Callejones de Las Majadas / DB

## *Landscape*

The spectacular nature of the varied landscapes of the Natural Park is determined by the combination of:

- Its bumpy orography.
- The beauty and diversity of the geomorphological formations, among which those corresponding to plateaus, enchanted cities, gorges, canyons, and cliffs predominate. ▶



Uña lagoon/ DB



Huelamo / DB



📍 • The intense and changing shades of the vegetation in the park, particularly striking in autumn..

• The traditional charm of the small villages that make up the various inhabited nuclei within the Park.. ■



**VIEWPOINTS IN THE PARK:** This territory boasts a wide network of viewpoints and observation points of the landscape. Check them out on public use maps or scan the QR code.



Public use map





Gorge with riparian vegetation / OGC

## *Flora and vegetation*

The forest masses, particularly pine forests, dominate the plant landscape. The floristic diversity is greatly favored by the presence of numerous gorges excavated by rivers, which, due to their soil and climate characteristics, have become an important refuge for Eurosiberian flora. The most represented plant formations correspond to Scots pine forests

(*Pinus sylvestris*), Austrian pine or black pine (*Pinus nigra* ssp. *salzmannii*), and maritime pine or cluster pine (*Pinus pinaster*).

Among the pine forests, various species of oaks are interspersed: holm oaks (*Quercus rotundifolia*) at lower altitudes, Portuguese oaks (*Quercus faginea*) at medium-high altitudes, and in



Basophilic Scots pine forest / OGC




Portuguese oak woodland / OGC



Spanish Juniper/OGC

the areas of siliceous nature, Pyrenean oaks (*Quercus pyrenaica*) and small remnants of sessile oak (*Quercus petraea*) at its southern limit within the Iberian Peninsula. Other formations of interest are juniper groves (*Juniperus thurifera*) on the plateaus, field maples (*Acer monspessulanum*), gallery forests associated with watercourses (willow and

poplar groves of various species from the genera *Salix* and *Populus*, highlighting the aspen (*Populus tremula*) and relic Eurosiberian forests: lime trees (*Tilia platyphyllos*), hazel groves (*Corylus avellana*), holly groves (*Ilex aquifolium*), and yew groves (*Taxus baccata*). Among the scrublands, the boxwood groves are abundant, and for their 



Creeping juniper / OGC



Rincon de Palacios / OGC



Heathlands of *Erica australis* / OGC

► conservation importance, the spiny deciduous shrublands, creeping juniper groves, spiny cushion shrublands, guillemets, and heather moors of the Sierra de Valdemeca stand out.

To complete the floral mosaic we have the wet meadows and the important rupes-trian vegetation associated with the innumerable rocky walls existing in the Natural Park.

**ENDANGERED FLORA:** Due to the high diversity of habitats present and their excellent degree of conservation, the Park harbours a high representation of threatened plant species and those of community interest with very different ecological preferences, in lakes, wetlands, peat bogs, riverbanks, cliffs, Euro-Siberian refuges, rodent habitats, as well as siliceous and limestone mountains. ■





Poplars (*Populus tremula*) / OGC



*Atropa baetica* / OGC



*Erodium macrocalyx* / OGC



*Convallaria majalis* / OGC



*Dactylorhiza incarnata* / OGC



Bonelli's eagle/ Karel Bartik\_Shutterstock

## Wildlife

Particularly significant are the birds that nest on the cliffs and pine forests, such as Bonelli's eagle, in danger of extinction, the golden eagle, the peregrine falcon, the Egyptian vulture, and, the most numerous of all, the griffon vulture.

Occasionally, the bearded vulture and black vulture, the other two Iberian vultures, can be seen. There is also a wide representation of birds associated with groves, cliffs, and riverside forests, such as the great spotted woodpecker, nightjars, thrushes, red-billed choughs,



Griffon vulture / Manatus\_Shutterstock



Grey heron/ DB

## ENDANGERED WILDLIFE



The high variety of mountain environments favours the development of a large number of wildlife species, many of which are included in the Regional Catalogue of Threatened Species.



Golden eagle/Colin Seddon\_Shutterstock



Red-billed chough /FJAH\_Shutterstock

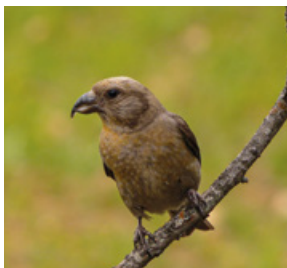
water ouzels, the red-billed chough, and various species of forest passerines (crested tits, coal tits, blue tits, and alpine accentors, among others). Also noteworthy is the presence of waterfowl and marsh birds, especially important in the Uña Lagoon. ▶



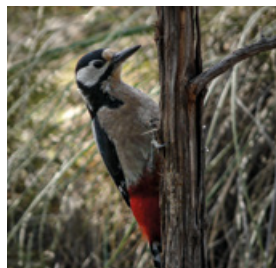
European dipper / Elkin Restrepo\_Shutterstock



Coal tit/ PG



Crossbill / PG



Woodpecker / PG



Mountain goat / Jose Luis Vega, Shutterstock



Common trout / JAG

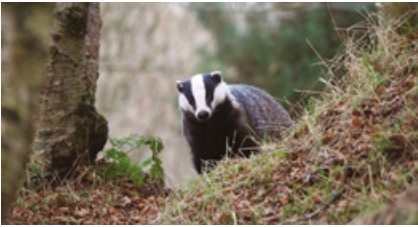


Crayfish / JAG

► In the group of the mammals, the most striking populations are those of wild ungulates such as the deer, the mountain goat, the roe deer, and wild boar. The populations of red squirrels, mustelids (genet, badger, and otter), and other carnivores like the wildcat are of special interest. Important populations of bats are present in the Park.

Among the fish fauna, the presence of populations of great genetic purity of the common trout and some cyprinids stands out, including the barbel, the Iberian chub, and the nase.

Regarding the invertebrate fauna, there is a large part of the populations of the native river crab and significant populations of various species of insects and



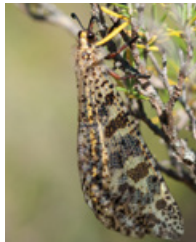
Badger/ Charlie Davidson, Shutterstock



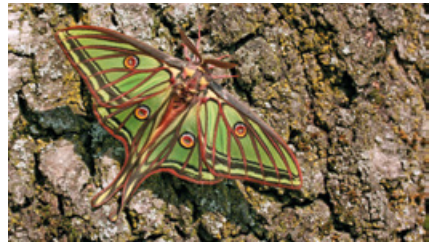
Wildcat/Jesus Cobaleda, Shutterstock



*Aeshna juncea* / CD



*Palpares libeluloides* / CD



Isabelline Butterfly / Andreas Weitzmann\_ Shutterstock

crustaceans, with the most notable belonging to the groups of butterflies, including the *Isabelline Butterfly* or Spanish moon moth, as well as other rare species like *Pyrgus cynarae*, *Maculinea arion*, *Iolana iolas*, etc. Additionally, there are beetles, grasshoppers, and dragonflies, with the presence of some endemics of

great interest like *Palpares libeluloides*. Among the reptiles, the ocellated lizard, the wall lizard, and the European pond turtle stand out, and among the amphibians, the fire salamander, the marbled newt, and the common midwife toad, species highly threatened due to the fragility of their habitats. ■



Ventano del Diablo, river sicke /DB



Overview of the mountain range/ TA

## *Geology and Geomorphology*

The Park is primarily supported by jurassic and cretaceous limestones and dolomites, with the presence of sandstones and conglomerates in the Sierra de Valdemeca and some outcrops of the Palaeozoic era. The general relief consists of elevated areas, plateaus or muelas, which are relatively flat and sectioned by intramountainous furrows due to the

action of watercourses, opening up wide valleys or enclosed and steep gorges or canyons of spectacular nature.

The carbonate nature of the soil has given rise to a great variety of karst formations, both on the surface and underground.

With all this, the Park is one of the best representations of these modelings in the Peninsula, with outstanding lapies



Lapiaz in Los Callejones de Las Majadas / DB



Tormagal in Los Callejones/TA



Sima SC-16

enriched with ruinform reliefs, known locally as tormagales or enchanted cities, among which the Ciudad Encantada (enchanted city) of Valdecabras and Los Callejones (the alleys) of Las Majadas stand out, being must-visit points. The presence of uvalas and dolinas or sinkholes is equally abundant. Equally spectacular are the limestone cliffs that limit the gorges, canyons, and valleys, highli-

ghting the Júcar canyon between Uña and Villalba de la Sierra and the cliffs and crags of the southern slope of the Muela de la Madera.

Regarding the underground or endokarst part, there are numerous caves and chasms, some of them very deep and beautiful, making them very interesting for the practice of speleology. ■



Sheep livestock / CD

## *Human activity in the Serranía de Cuenca*

The natural resources offered by the territory of the Serranía de Cuenca have allowed the presence of human beings since time immemorial, based on the sustainable use of these resources. This human activity has contributed to the conservation and current configuration of the landscape and the historical and ethnographic heritage. The main uses that have traditionally been carried out in the territory are tho-

se of timber and firewood, extensive livestock farming, hunting, and fishing, mycology, beekeeping and even resin production. In recent times, with the rise of rural tourism and the public use of the natural environment, the presence of humans in recreational and sports activities based on the enjoyment of the natural environment has become increasingly important



The territory of the Natural Park integrates a total of eleven small urban centres which, according to the 2020 INE census, have a total population of 1,587 inhabitants, which represents a slightly higher density than 2 inhabitants/km<sup>2</sup>, one of the lowest in Europe, with a trend in recent decades of progressive depopulation (the population of the municipality of Cuenca is not taken into account, even though it contributes an important surface area to the Natural Park; its main town is located outside its limits).



Resin extraction / LFRabanedo, Shutterstock

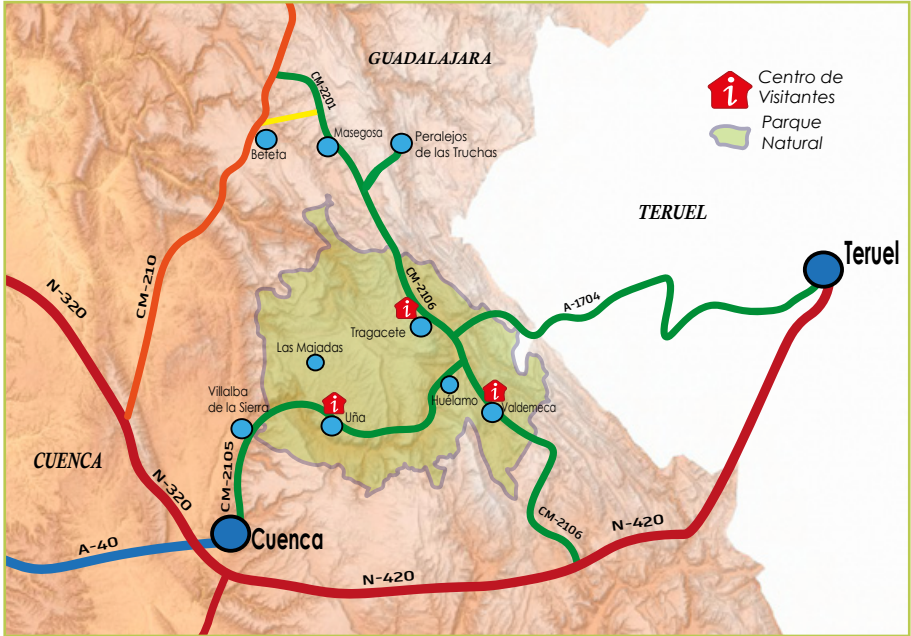
# N A T U R A L E A L A S E R R A N Í A D E C U E N C A

“Naturlear” is to immerse oneself in the natural world, to venture into the territory, to explore its paths, to peacefully enjoy its villages and nature, leaving behind no trace except that of the respect with which we do so.

Access the public use map of the Park in pdf format:

[Map](#)

[Information](#)



## Site access and visit preparation

Take advantage of its proximity to the park to enjoy the city of Cuenca, a World Heritage Site. The combination of history, culture and nature is unparalleled.

### ACCESS TO THE NATURAL PARK

#### From Cuenca:

The most immediate access is via the CM-2105 road to the town of Villalba de la Sierra, where you enter the southwest area of the Natural Park.

#### From Madrid:

The most immediate way to access is to reach the capital of Cuenca and then take the route indicated above.

 Download the public use map of the Park in PDF format





## Cuenca / TA

### From Valencia:

In addition to being able to do so via the capital of Cuenca, it is also possible to access via the town of Cañete, which is reached via the N-420 road, to turn off onto the CM-2106 and thus penetrate through Huerta del Marquesado and Valdemeca to the southeast area of the Park.

### From Guadalajara:

Via the CM-210 road from Beteta or Cueva del Hierro to turn off onto the CM-

2201 through Masegosa and then onto the CM-2106 towards Tragacete, where, after passing the Natural Monument of the Source of the Cuervo River, you enter the Natural Park from the north.

### From Teruel:

From Albaracín, via the A-1704 road, or from Guadalaviar, via the TE-V-9032 road, you reach the Puerto del Cubillo, entering the Natural Park via the CM-2119 on its eastern side. ■



El Escalerón y la Raya / TA

## *Learn more and start your visit*

In this section, you can find more information about the Natural Park. You'll get the most out of your visit if you plan it properly. Some of the pre-visit tasks you can do include:

- Familiarising yourself with the various public facilities available (trails, recreational areas, refuges, etc.)
- Finding out about the different activities scheduled during your visit dates.
- Deciding where to stay based on the activities you intend to do.

- Booking any activities or visits that require prior reservation.
- Preparing the necessary equipment and clothing.

The Reception and Interpretation Centres are the ideal places to start your journey; there, you can get informed, understand the values of the space, and plan the details of your stay in the Natural Park. Additionally, trails that will take you deeper into this territory depart from these centres.

### **VISITOR'S CENTRES OF THE PARK**



The Natural Park of Serranía de Cuenca has three Visitor and Interpretation Centers that are open from Holy Week until the end of autumn, weekends, holidays, and bank holidays. Before visiting, check the opening hours and calendar, as well as other relevant information in the VISIT AND ENJOY section on the Park's website.



Visitor's centre of the  
Natural Park





Tragacete / JAG

### Reception and Interpretation Centre of Tragacete



A large, avant-garde building located within the urban area of Tragacete. The exterior walls are made of structural steel and glass slats. The shape of the centre resembles the geographical features typical of the terrain in the Serranía. It offers an extensive exhibition on the park's values with panels, models, tables, and interactive projections. It also features displays of tools and equipment used in traditional activities associated with the park.

### Reception and Interpretation Centre of Uña



Situated in the urban area of Uña, next to the lagoon. The exhibition resources focus primarily on water and its significance as the lifeblood of the aquatic ecosystem of the Uña Lagoon. There is a spacious viewpoint for a comple-



Uña / JAG



Valdemeca

te view of the lagoon and a telescope for detailed observation of the aquatic fauna. It includes audiovisual material on the "life" of the Río Júcar and its interaction with the inhabitants of the Serranía.

### Reception and Interpretation Centre of Valdemeca.



Located in the urban area of Valdemeca, with facades resembling the hues of the rocks and characteristic soils of the dominant geologies in the Sierra de Valdemeca, such as reddish sandstones or rodenos.

It provides a simple representation of the various landscapes, geology, geomorphology, plant species, with a particular focus on mycological resources. ■

# EXPLORE THE PARK

The Natural Park Serranía de Cuenca has an extensive network of picnic areas, viewpoints, shelters and waymarked trails that will help you explore the territory and discover it. They are distributed throughout the Park and oriented to the different interests and abilities of the visitor.

## HIKING TRAILS

We can find walking trails with different levels of difficulty and length offering an active yet healthy way of

getting to know the Park. You must act responsibly, given the risks and difficulty that they may entail.

**EASY TRAILS:** for families with kids and inexperienced hikers.



Molino de la Chorrera waterfall / FGP



Fuente de la Ardilla / FGP

- 2 Los Callejones:**  
● Las Majadas ↻ 3,6 Km.  
🌿 🏠

---

- 5 Subida al Castillo de Huélamo**  
● Huélamo → 0,34 Km  
🌿 🏠

---

- 6 Cascada del Molino de la Chorrera**  
● Tragacete → Two routes:  
Low 0,5 Km. High 0,3 Km  
🌿 🏠

---

- 8 Fuente de la Ardilla-Estepares (ruta micológica)**  
● Valdemeca ↻ 4 Km  
🌿 🏠

---

- 9 Itinerario interpretativo de Los Lagunillos**  
● AR Lagunillos → 1 Km  
🌿 🏠

00 Trail number on the map

● Starting point

🌿 Environmental interest

→ Linear trail

🏠 Cultural interest

↻ Loop trail



**INTERMEDIATE TRAILS:** For more experienced hikers. They require preparation for the journey and appropriate equipment. Trails that may fall into this category are easy paths with some challenging or slightly risky sections.

- 1 **Dehesa de los Olmos:**  
📍 AR Fuente Tía Perra 🔄 Two routes:  
Long 13 Km., short 4,5 Km. 🥾 🧎

- 4 **El Escalerón y la Raya**  
📍 Uña 🔄 9 Km  
🥾 🧎

- 7 **El Masegar**  
📍 Huélamo 🔄 Two routes:  
Long 9,8 Km., short 4,3 Km. 🥾 🧎

- 12 **Beamud-Molino de Juan Romero**  
📍 Beamud, 🔄 Three routes:  
Long 14 Km., intermediate 13 Km., short 9 Km. 🥾 🧎



Travertino waterfall in Uña



Masegar trail/JLS

## Las Fuentecillas y Los Callejones



**MODERATE TRAILS:** Require more experience and physical preparation, as well as the availability of longer working hours.



Casa del Cura

3

### Las Fuentecillas y Los Callejones

Las Majadas 12,9 Km.



10

### Casa del Cura

Valdemeca 15,6 Km.



11

### San Blas-San Felipe\_Río Cuervo

Albergue de san Blas: →

With two alternative layouts: West 10,3 Km. , East 11 Km.



**OTHER TRAILS:** In addition to these official trails of the Natural Park, there are other approved trails of interest for visitors within it that can be consulted by scanning this QR code.



Cuenca Trails  
Website





## LONG DISTANCE TRAILS

### INTERMEDIATE LEVEL



GR  
66

### GR 66 SENDERO CASTELLANO-MANCHEGO

Long-distance trail that crosses Castilla-La Mancha from North to South. In the province of Cuenca, it enters from the North, coming from Peralejos de las Truchas (Guadalajara) in the Natural Park of Alto Tajo, and crosses the entire province until

it enters Iniesta in the province of Albacete. It is divided into four sectors, of which the one called B (Tragacete-Uña) runs entirely within the limits of the Natural Park (35.4 km), while sectors A and C partially run within the same, specifically A from its entrance from Santa María del Val to Tragacete (15.1 km) and C from Uña to the Southern limit of the Natural Park in the term of Valdecabras (Cuenca) (7.6 km).

00 Trail number on the map

 Environmental interest

 Cultural interest

 Starting point

 Linear trail

 Loop trail



## CAMINO NATURAL DEL JÚCAR

Path included in the Natural Paths program of the Ministerio de Medio Ambiente (Ministry of Environment), being this entity responsible for its equipment and maintenance. It is a trail project of over 500 km along the entire course of the Río Júcar from its source to its mouth at the Mediterranean Sea in Cullera, after crossing the provinces of Cuenca, Albacete, and Valencia. Currently, only the section in the province of Cuenca, spanning approximately 230 km, is under construction.

### STAGES IN THE NATURAL PARK OF SERRANÍA DE CUENCA:

- 1 **STAGE 1: Nacimiento del Júcar (Estrecho del Infierno) - Tragacete.** ➡ 5,9 Km. 🌿 🏞️
- 2 **STAGE 2: Tragacete – Huélamo** ➡ (16,6 Km.) 🌿 🏞️
- 3 **STAGE 3: Huélamo – Area recreativa de Juan Romero** ➡ 28,04 Km. 🌿 🏞️
- 4 **STAGE 4: Uña – Villalba de la Sierra** ➡ 13,8 Km. 🌿 🏞️

*(There is a discontinuity between stages 3 and 4 that users must take into account.)*

## BIKE TOURS

Path that, due to its length and characteristics, is projected to be primarily undertaken by cyclists.



- 1 **Ruta cicloturista de Zafrilla**
  - 📍 Zafrilla (Cuenca): Intermediate level route
  - ➡ 28 Km. long.
  - Starting from municipality of Zafrilla 🌿 🏞️

**In the back of the map in this guide, detailed information about each route is provided.**

#### HELP US PRESERVE THEM:

If you find any damaged or dangerous facilities or equipment, send us a georeferenced image with any relevant instructions to the email address [pserraniacuenca@jccm.es](mailto:pserraniacuenca@jccm.es)

00 Trail number on the map

🌿 Environmental interest

🏞️ Cultural interest

📍 Starting point

➡ Linear trail

🔄 Loop trail



Fuente de la Tía Perra



Fuente del Arenazo



Picnic area Lagunillos

## VIEWPOINTS AND PICNIC AREAS

The Natural Park de la Serranía de Cuenca offers an extensive network of recreational areas equipped for enjoying a pleasant day in nature with family or friends:

- 1 Fuente de las Tablas (Cuenca)
- 2 Molino de Juan Romero (Cuenca)
- 3 Fuente de la Ardilla (Valdemeca)
- 4 Lagunillos (Cuenca)
- 5 Fuente de la Tía Perra (Cuenca)
- 6 Fuente del Arenazo (dos zonas) (Cuenca)
- 7 San Blas (Tragacete)
- 8 Alto de la Vega (Cuenca)

These facilities are equipped with picnic tables and benches, complemented in some cases with additional amenities such as

fountains and barbecues (subject to forest fire legislation).

Additionally, within the Park, there are other recreational areas managed by the respective Town Councils, specifically those at El Pozuelo (Huélamo), La Dehesilla (Valdemeca), El Vasallo (Tragacete), and La Senda de los Pastores (Beamud).



Discover them on the  
Map of the Park



## SHELTERS

Located in different areas of the Natural Park are facilities intended for overnight stays by its visitors. The use of these shelters is open, free of charge, and without prior reservation. Generally, they are equipped for resting and lighting fires:

- 1 Vaquerizas (Restricted and regulated access)
- 2 Refugio del Tío Pío (Cuenca)
- 3 Refugio de la Majada del Tío Ildefonso (Under repair)
- 4 Las Majadas



- 5 Refugio de la Mesta (Sierra del Agua) (Cuenca)
- 6 Refugio del Pozarrón (Cuenca)
- 7 Refugio de la Alconera (Cuenca)
- 8 Refugio de Huerta de los Descalzos (Valdemeca)
- 9 Refugio de la Casa del Cura (Valdemeca)



## SITES AND RESOURCES OF INTEREST

The wide extension of the Serranía de Cuenca Natural Park makes it necessary to dedicate several days to explore each of the spectacular corners it houses, which will undoubtedly satisfy visitors' curiosity. To plan your visit in parts, below are the most interesting spots that visitors can find, along with the various infrastructures and trails detailed earlier:

**In the North area of the Park**, we will enjoy the highest stretch of the Río Júcar with the spectacular landscapes of the Estrecho del Infierno and the waterfall of Molino de la Chorrera, in Tragacete, a charming mountain village well worth a visit. Also of interest is the ascent to Cerro de San Felipe (on trail number 11) and a visit to see

the spectacular specimen of black pine known as Pino del Osejón. This route through the Tragacete area must include a visit to the nearby Nacimiento del Río Cuervo with its spectacular travertine waterfalls.

Heading Northwest, we find the upper course of the Río Escabas which, along with its tributary Arroyo del Obriguillo, offers spectacular landscapes based on water and riverside vegetation typical of the Eurosiberian region.

To the Northeast, following the road connecting this region with the province of Teruel, bordering the Alto Tajo Natural Park, we can enjoy a succession of gorges and slopes covered with dense pine forests, culminating in the peak of La Mogorrita, the highest point in the province of Cuenca.



El Hosquillo




Cerro San Felipe / FGP

**The central area of the Park** is dominated by the wide extension of the so-called Muela de la Madera, without inhabited nuclei, highlighted by the presence of the El Hosquillo Wildlife Center, in the upper course of the Río Escabas, where visitors can see the large mammals that inhabit the Natural Park along with other species of interest such as wolves and brown bears. A prior appointment is necessary to visit El Hosquillo. In any case, a visit to the Mirador de la Peña del Reloj is essential for a spectacular panoramic view of the entire valley.



QR Code for El  
Hosquillo and its  
Booking Page



**The Western area of the Park** is located around another pleasant mountain village, Las Majadas, where visitors should go to have the opportunity to marvel at one of the geological wonders in the Park, the Callejones de Las Majadas, where the whimsical forms shaped by karstic relief over time 



Dehesa de los Olmos

📍 can be admired. This visit coincides with trail number 2.

Very close to Callejones (on trail number 3), one must not miss the chance to approach and gaze out from the Tío Cogote Viewpoint, offering impressive views of the River Júcar where various species of raptors like griffon vultures, peregrine falcons, golden eagles,

among others, can be spotted at close range.

North of Las Majadas, visitors can take a pleasant stroll through the Dehesa de los Olmos. A visit to this area is a must during autumn when the maple leaves start to fall, creating a colorful spectacle with their reddish hues.

**The Eastern area of the Park** is home to two typical mountain villages, Huélamo and Valdemeca, with significant ethnographic resources that will be detailed later. In this area it is obligatory to visit Sierra Valdemeca due to its litologic and geomorphologic singularity, derived from the siliceous nature of its rocks, which along with its special microclimate, provide a rich and valuable flora and a spectacular landscape. The Centenar Viewpoint (on trail number 10) offers a beautiful pano-



Rincón de Palacios




Uña lagoon/DB

ramic view of the entire Sierra. Similar botanically and scenically interest are the extensive formations of creeping juniper in Rincón de Palacios in Zafrilla.

Other interest points in this area include the valley and old settlement of Casa del Cura (also on trail number 10) in Valdemecca, and the Almagrero Stream in Huélamo.

**The Southern area of the Park** is structured along the most advanced stretch of the Río Júcar, with the presence of the towns of Uña and Beamud. The right bank of the river, passing through Uña, features a wide alignment of limestone cliffs of great scenic beauty, supporting a significant population of

various species of cliff-dwelling and forest raptors, allowing visitors to enjoy their observation. This section of the Río Júcar also highlights the presence of the Toba Reservoir, where various recreational and sports activities can be carried out. A walk around the Uña Lagoon, located in the town, is a must for its exceptional beauty and rich birdlife with a significant population of waterfowl that can be observed. Also, in the surroundings of Uña, visitors will find the Fish Farm of Rincón de Uña, housing the Regional School of River Fishing, the spectacular route of the Escalerón and la Raya trail (trail number 4), the path along the Madera Stream and the Cathedrals, and the fossil travertine 



Ciudad Encantada/DB



Fish farm Rincón de Uña/TA

► waterfall (currently inactive) formed by the joining of the Rincón Stream with the Río Júcar.

In the Muela de Valdecabras, south of the Río Júcar, lies another major geomorphological formation of interest within the Natural Park, the renowned Ciudad Encantada, a whimsical collection of karstic formations of extraordinary beauty that deserve a visit (management of this area is private). A must-visit spot is the Ventano del Diablo Viewpoint in Villalba de la Sierra, located next to the CM-2015 road, offering a high-altitude view of the impressive canyon created by the Río Júcar between the towns of Uña and Villalba de la Sierra, leaving visitors with an indescribable visual sensation.

Another area worth exploring is the one surrounding the Albergue de la Fuente de las Tablas. Enjoyable walks can be taken along the course of the Boquerón Stream, up to the Cave of the same name, as well as ascents to the three elevations surrounding it, Monteagudillo (topped by a large rocky slab providing spectacular views of much of the Sierra), Cabeza Gorda, and la Modorra. ■

Júcar canyon  
(cliffs of Villalba  
de la Sierra)/ DB





Shelter in the Noguerón of Beamud / JLS



The illustrated landscape, Tinsmiths / AM

## ARCHITECTURAL AND ETHNOGRAPHIC RESOURCES

In general, it is very interesting to dedicate some time of the visit to exploring the small villages located within the Natural Park, all of them of small dimensions, where you can breathe in the taste of the architecture and mountain customs and enjoy the typical gastronomy.

A special mention is deserved to the town of Huélamo, situated halfway up a steep slope, whose origins date back to the dawn of our civilization and for many centuries held great importance both in the trade of goods between this region and neighboring ones like Albarracín, as well as from a military perspective; during this visit, it is essential to approach the remains of the castle, of Arab origin, located on a striking rocky promontory.

Another point of interest is found in Valdemeca, located in the valley of the river of the same name, which houses the so-called *El paisaje ilustrado* (illus-

trated landscape), an outdoor exhibition scattered throughout the town consisting of a set of sculptures that recreate various aspects of the traditional activities and customs typical of the Serranía de Cuenca, leaving a lasting impression on all who visit.

Another ethnographic point of interest is the medieval bridge of Huélamo, located near the mouth of the Almagrero Stream into the Río Júcar, downstream from the town of Tragacete.

And finally, it is worth highlighting the numerous examples scattered throughout the Natural Park of traditional architecture associated with the livestock use of forest masses, known as “tinadas,” as well as remnants of infrastructure that were used until not many years ago to exploit the resources offered by the environment, including lime kilns (for obtaining lime), pitch boilers (for obtaining pitch), and tile works. ■

## REGULATION OF PUBLIC USE SPORTS AND ACTIVITIES IN THE NATURAL PARK

Until the new planning regulations (PRUG and Sectorial Plans) come into force, public use activities are regulated as follows:

• **Hiking, cycling, horse riding, and swimming:** Allowed throughout the Park without the need for authorization.

• **Vivac (Bivouacking):** Allowed throughout the Park without the need for authorization.

• **Camping:** Free camping is prohibited. For trekking, prior authorization is required. There are controlled camping areas managed by municipalities and companies (check).

• **Use of motorhomes** Subject to prior authorization.

• **Organized motor vehicle routes:** Subject to authorization and only on the authorized track network declared by the Natural Park.

• **Sports activities and tests such as climbing, caving, canyoning, canoeing, mountain races, etc** Subject to prior authorization.

• **Overnight stays in shelters:** In the network of open shelters, use is unrestricted, free, and without reservation. Additionally, there are a series of hostels within the Park managed by private companies (check).

• **Mushroom picking:** Except in municipalities with specific regulations (check), picking is free, in accordance with the applicable specific legislation. ■



Trail signs/ JAG



Mycology/ TA



Canoeing/ DB



Bike tourism/ DB



Canyons/ DB





## ***Safety, rules and recommendations. Help us protect the Park!***

- *Using the trails and other equipment in the natural areas may entail some risks. Take necessary precautions to enjoy them responsibly.*
- *Do not make noises disturbing the wildlife or causing inconvenience to other visitors.*
- *Help us keeping the natural area clean. Do not litter; only dispose litter in the bins located the urban areas.*
- *No fires permitted. Please do not throw burning cigarettes.*
- *Free camping is not allowed.*
- *Please respect flora, wildlife and protected area.*
- *Using soaps and detergents is not allowed in natural water courses.*
- *Keep pets supervised at all times.*
- *Please obey all signs and indications from the park rangers and support staff of the protected area.*
- *Try to avoid motor vehicles when possible. When in use, maximum speed limit is 30 km/h on trails and paths.*
- *In order to prevent problems of soil erosion and for your safety, do not leave designated paths and trails.*
- *Extreme temperatures can be reached both in summer and winter, please dress accordingly. Appropriate footwear is required all year round.*

## ***Learn more***

Natural Park website: <https://areasprotegidas.castillalamancha.es/serrania-de-cuenca>  
email: [pnseraniacuenca@jccm.es](mailto:pnseraniacuenca@jccm.es)



FISHING  
SCHOOL IN UÑA



MOUNTAIN  
FEDERATION  
CASTILLA-LA MANCHA



FEDERATION  
CASTELLANO MAN-  
CHEGA CAVING AND  
CANYONS



TOURISM OFFICE IN  
CUENCA



CUENCA TRAILS



PARK WEBSITE



TOURISM WEBSITE  
NATURAL PARK



ZEC-ZEPA-SERRANIA  
DE CUENCA





Los Callejones de las Majadas / Tasón

*Índice* .....

Documento  interactivo .....



# Naturalea

CASTILLA-LA MANCHA

DO YOU PRACTISE NATURALEAR?



Learn more



PARQUE  
NATURAL  
SERRANÍA  
DE CUENCA  
Red de Áreas  
Protegidas de CLM



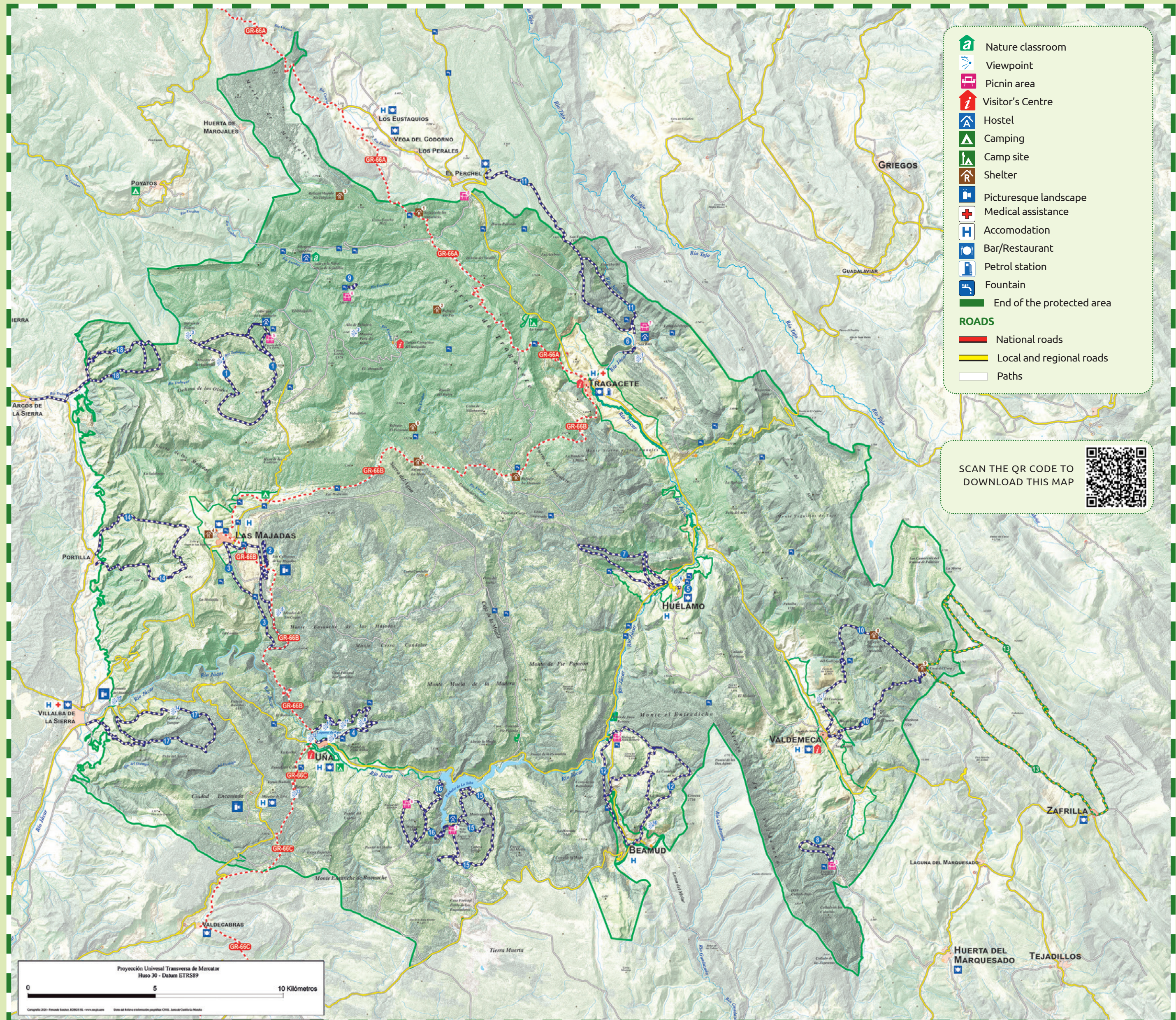
Castilla-La Mancha

# SERRANÍA DE CUENCA

*Natural Park*


[▶ Volver a Naturalea el Alto Tajo](#)

## PUBLIC USE MAP OF THE NATURAL PARK WITH PERIPHERAL PROTECTION ZONE



- Nature classroom
  - Viewpoint
  - Picnic area
  - Visitor's Centre
  - Hostel
  - Camping
  - Camp site
  - Shelter
  - Picturesque landscape
  - Medical assistance
  - Accommodation
  - Bar/Restaurant
  - Petrol station
  - Fountain
  - End of the protected area
- ROADS**
- National roads
  - Local and regional roads
  - Paths

SCAN THE QR CODE TO DOWNLOAD THIS MAP



- ### VIEWPOINTS
- |                                   |                     |                         |
|-----------------------------------|---------------------|-------------------------|
| 1 MOLINO DE LA CHORRERA WATERFALL | 6 CASTLE IN HUÉLAMO | 11 EL RINCÓN DE UÑA     |
| 2 PEÑA DEL RELOJ                  | 7 EL CENTENAR       | 12 EL TRAVERTINO DE UÑA |
| 3 BalcÓN DE PILATOS               | 8 EL REFRENTÓN      | 13 UÑA VIEWPOINT        |
| 4 LAS LIBRERÍAS                   | 9 LA LAGUNA DE UÑA  | 14 PEÑA DEL YUNQUE      |
| 5 TÍO COGOTE                      | 10 BIRD OBSERVATORY | 15 VENTANO DEL DIABLO   |
|                                   |                     | 16 BEAMUD VIEWPOINT     |

- ### PICNIC AREAS
- |                         |                          |
|-------------------------|--------------------------|
| 1 FUENTE DE LAS TABLAS  | 5 FUENTE DE LA TÍA PERRA |
| 2 MOLINO DE JUAN ROMERO | 6 FUENTE DEL ARENAZO     |
| 3 FUENTE DE LA ARDILLA  | 7 SAN BLAS               |
| 4 LAGUNILLOS            | 8 ALTO DE LA VEGA        |

- ### VISITOR'S CENTRE
- TRAGACETE VISITOR'S CENTRE
  - UÑA VISITOR'S CENTRE
  - VALDEMECA VISITOR'S CENTRE
  - WILDLIFE CENTRE EL HOSQUILLO

- ### CAMPSITE (managed by local government)
- LA VEREDILLA (TRAGACETE)

- ### SHELTERS
- |                        |               |                           |
|------------------------|---------------|---------------------------|
| 1 VAQUERIZAS           | 4 LAS MAJADAS | 7 LA ALCONERA             |
| 2 TÍO PÍO              | 5 LA MESTA    | 8 HUERTA DE LOS DESCALZOS |
| 3 MAJADA TÍO ILDEFONSO | 6 EL POZARRÓN | 9 CASA DEL CURA           |

- ### GR LONG DISTANCE TRAILS
- |           |                              |         |
|-----------|------------------------------|---------|
| GR-66 - A | MARTINETE - TRAGACETE BRIDGE | 71,6 km |
| GR-66 - B | TRAGACETE - UÑA              | 35,4 km |
| GR-66 - C | UÑA-PALOMERA                 | 47,6 km |

- ### PR SHORT DISTANCE AND LOCAL TRAILS
- |                                     |         |   |         |
|-------------------------------------|---------|---|---------|
| 1 DEHESA DE LOS OLMOS               | 13 km   | 11 SAN BLAS-SAN FELIPE-RIO CUERVO                     | 11 km   |
| 2 LOS CALLEJONES DE LAS MAJADAS     | 3,6 km  | 12 BEAMUD-MOLINO DE JUAN ROMERO                       | 14 km   |
| 3 LAS FUENTECILLAS Y LOS CALLEJONES | 12,9 km | 13 ZAFRILLA MOUNTAIN BIKE ROUTE                       | 28 km   |
| 4 EL ESCALERÓN Y LA RAYA            | 9 km    | 14 EL GOLLIZNO Y LAS CANTERAS (municipal management)  | 12,2 km |
| 5 CASTLE IN HUÉLAMO                 | 0,4 km  | 15 MONTEAGUDILLO (County Council management)          | 15,2 km |
| 6 MOLINO DE LA CHORRERA WATERFALL   | 0,4 km  | 16 VUELTA A LA MODORRA                                | 15 km   |
| 7 MASEGAR ROUTE                     | 9,8 km  | 17 LA PIEDRA Y EL YUNQUE ROUTE (municipal management) | 14,2 km |
| 8 FUENTE DE LA ARDILLA-ESTEPARES    | 4 km    | 18 PICAYO ROUTE (municipal management)                | 13 km   |
| 9 LOS LAGUNILLOS                    | 1 km    |   |         |
| 10 CASA DEL CURA                    | 15,6 km |   |         |

- ### MOUNTAIN BIKE ROUTES (MTB)
- |                              |       |
|------------------------------|-------|
| Zafrilla mountain bike route | 28 km |
|------------------------------|-------|

- ### RULES IN THE PARK:
- Do not make noises disturbing the fauna or causing inconvenience to other visitors.
  - Do not litter. Dispose garbage in the bins located in the urban areas.
  - No fires permitted. Please do not throw burning cigarettes.
  - Free camping is not allowed.
  - Non-authorized drones are not allowed.
  - Keep pets supervised at all times.
  - Please follow all signs and indications from park officers and support staff of the protected area.
  - Maximum speed limit is 30 km/h on trails and open paths for motor vehicles.
  - Parking out of designated areas is prohibited.

- ### FOR YOUR SAFETY:
- Extreme temperatures can be reached both in summer and winter, please dress accordingly.
  - Appropriate footwear is required all year round.
  - Please, stay on the paths designated by the nature park. Take the necessary precautions and enjoy them responsibly.
  - Please, stay on the paths designated by the nature park.
  - Railings, handrails and similar infrastructures are elements to delimitate and to close the trails. They are not protective or security elements. Do not climb or lean on them to prevent falls.

## HIKING TRAILS

### 1 DEHESA DE LOS OLMOS

- Picnic area Fountain Tía Perra
- 13 Km./ 4,5 Km. 🚶 🏠 📶

**Level:** Intermediate

**Distinctive features:** Representative woodland of the great floral diversity of the Natural Park, pine forests, oak groves, juniper groves, highlighting the grazed area of Dehesa de los Olmos, with remarkable oaks and maples displaying a spectacular array of colors in autumn.. Option for a short trail available, more suitable for visitors with a lower physical fitness level.



### 2 LOS CALLEJONES

- Los Callejones car park
- 3,6 Km.

**Level:** easy

**Distinctive features:** Enchanted city with one of the finest representations of the rocky landscape of karst relief on the limestone pavements. Excellent stroll through alleys and tormos to awaken the imagination, guessing similarities in the whimsical shapes of the rocks.



### 3 LAS FUENTECILLAS Y LOS CALLEJONES

- Las Majadas
- 12,9 Km. 🚶 🏠 📶

**Level:** Moderate

**Distinctive features:** Floral and geomorphological resources. Magnificent stands of oak and pine, with Eurosiberian vegetation. Large cliffs, offering spectacular views of the Río Júcar valley. Finally, the trail connects with The Callejones de Las Majadas, with its spectacular whimsical limestone pavement in stone formations.



## HIKING TRAILS

### 4 EL ESCALERÓN Y LA RAYA

- Uña
- 9 km 🚶 🏠 📶

**Level:** Intermediate

**Distinctive features:** The lagoon is surrounded with lush vegetation on the ascent of Escalerón, with the presence of Eurosiberian flora and rocky outcrops through which we will navigate to access the Muela de la Madera with impressive pine forests. It is proximate to golden eagles and other rocky species in their settlements on the outcrops of Rincón de Uña. The landscape from the viewpoints of Refrentón and Rincón de Uña, and from the singular descent of the outcrop between the alleys of the entrance to Raya, are spectacular. It is the most visited path in the park.



### 5 ASCENT TO THE CASTLE IN HUÉLAMO

- Huélamo
- 0,4 Km 🚶

**Level:** Easy

**Distinctive features:** The trail of Huélamo, is crowned by a spectacular cliff where we can admire the urbanism and architecture typical of the Serranía. We can also visit the remains of the ancient Arab fortress, while enjoying a magnificent view of the Río Júcar valley in its upper course.



### 6 TRAGACETE - DEL MOLINO DE LA CHORRERA WATERFALL

- Tragacete
- Low 0,5 Km. High 0,3 Km 🚶

**Level:** easy

**Distinctive features:** First Tufa Waterfall of the Río Júcar. Easy walk to the base of the waterfall with lush pine forest vegetation on the slopes and numerous riverside species..



## HIKING TRAILS

### 7 MASEGAR ROUTE

- Huélamo
- Long 9,8 Km., short 4,3 Km. 🚶 🏠 📶

**Level:** Intermediate

**Distinctive features:** From the valley of the Río Júcar to the peaks of the mountain range that delimits it, we will be able to witness various traditional activities of the Serranía, increasingly abandoned crops, extensive livestock farming, and remnants of old lime kilns and brickworks. Pine forests, oak groves, remnants of Eurosiberian flora, and magnificent views of the valley. There is the possibility of taking a short tour for visitors with less physical endurance.



### 8 FUENTE DE LA ARDILLA-ESTEPARES (MICOLÓGICO)

- Picnic area Fuente de la Ardilla
- 4 Km 🚶 🏠 📶

**Level:** Easy

**Distinctive features:** Educational tour to observe a representation of the mycological richness of the Sierra de Valdemeca in its different habitats: Scots pine forests, red pine forests, and meadows and clearings in the forest.



### 9 INTERPRETATIVE TRAIL OF THE PICNIC AREA LOS LAGUNILLOS

- AR Lagunillos (TM Cuenca)
- 1 km 🚶 🏠 📶

**Level:** Easy

**Distinctive features:** Magnificent pine forest that populate the valley of the Río Escabas, delimited by spectacular geomorphological formations of karstic origin: canyons, cliffs, and special mention of the Lagunillo which gives its name to the area and is a must-visit.



## HIKING TRAILS

### 10 SENDERO DE LA CASA DEL CURA

- Valdemeca
- 15,6 Km. 🚶 🏠 📶

**Level:** Moderate

**Distinctive features:** Access to the green valley of the Casa del Cura, with fresh pastures for livestock. Along the route, we will visit the abandoned hamlet of Rento de la Casa del Cura, with its old oven rehabilitated as a shelter. Impressive limestone cliffs of Las Cordilleras and the Gollizno Waterfall. From the Centenar viewpoint, we will have a privileged view of the valley and the Valdemeca mountain range.



### 11 SAN BLAS-SAN FELIPE-RIO CUERVO

- San Blas hostel (Tragacete)
- West 10,3 Km., East 11 Km. 🚶 🏠 📶

**Level:** Moderate

**Distinctive features:** High Peaks. River Crossroads. It passes through three emblematic protected natural spaces, the Natural Parks of Alto Tajo and Serranía de Cuenca, and the Natural Monument of Nacimiento del Río Cuervo. It leads us to the summit of one of the highest mountain ranges in the province; Cerro de San Felipe, witness to the division between the Atlantic, and Mediterranean watersheds of the Peninsula. We will traverse through meadows and lush Scots pine forests, with a rich accompanying arboreal and shrubby floral display. The trail ends next to the Nacimiento del Río Cuervo.



## HIKING TRAILS

### 12 BEAMUD-MOLINO DE JUAN ROMERO PR-CU112

- Beamud
- Long 14 Km., Intermediate 13 Km., short 9 Km. 🚶 🏠 📶

**Level:** Intermediate

**Distinctive features:** Great variety of flora and geomorphology with spectacular chromatic diversity. Possibility to follow three different itineraries, where we can observe remnants of different ethnographic elements associated with human use of the mountain.



## BICYCLE TOURISM

### 13 ZAFRILLA MOUNTAIN BIKE ROUTE

- Zafrilla
- 28 Km. length. 🚶 🏠

**Level:** Intermediate

**Distinctive features:** Spectacular landscapes with groves flanked by slopes of Scots pine and white pine, passing through the deserted area of the Casa del Cura to the Ceja de la Umbria del Oso. From this lookout point, you can observe the different valleys that make up this area of the Serranía: the valley of the Rento de la Veredilla and Prado Redondo, and on the other hand the Arroyo de la Recloba and Tierras Viejas, with a landscape of rocky slopes with old specimens of sabina albar.



## SYMBOLS FOR ALL ROUTES

- Starting point
- Loop trail
- Linear trail
- 🏠 Route with shade for at least 50% of its course
- 🚰 Fountain
- 🏞 Cultural interest
- 👁 Viewpoint
- 🏠 Shelter
- 📍 Visitor's centre

## GR 66

### GR 66 TRAIL CASTELLANO-MANCHEGO IN THE NATURAL PARK OF THE SERRANIA DE CUENCA

- Sector A: Santa María del Val; Sector B: Tragacete; Sector C: Uña
- Sector A: 15,1 Km; Sector B: 35,4 Km.; Sector C: 7,6 Km. 🚶 🏠 📶

**Level:** Intermediate

**Distinctive features:** Long-distance trail that allows us to take a journey that crosses the heart of the park through representative forests of pine, oak, and juniper, over high plateaus or 'muelas' where the effects of karstic modelling can be appreciated, highlighting the gorges and canyons, as well as limestone and ruiniform reliefs locally known as tormagales or enchanted cities. During the winter period, it's possible to enjoy the snowy landscapes that can extend from the summits to the valley areas, and in the spring and summer seasons, the blooming of different species significantly enriches the landscape.

It is divided into four sectors, of which the one called B (Tragacete-Uña) runs entirely within the boundaries of the Natural Park (35.4 km), while sectors A and B run partially within the same, specifically A from its entrance to Tragacete (15.1 km) and C from Uña to the southern boundary of the Natural Park in the municipality of Valdecabras (Cuenca) (7.6 km).

Consult the map and visitor guide according to the section to be covered

## TECHINCAL SHEET

• **NAME:** Parque Natural de la Serranía de Cuenca

• **AREA:** 74.053 ha

• **PROVINCES AND VILLAGES INTEGRATED IN THE PARK:**

Province of Cuenca, 12 municipal terms: Arcos de la Sierra, Beamud, Cuenca, Huélamo, Huerta del Marquesado, Las Majadas, Portilla, Tragacete, Uña, Valdemeca, Villalba de la Sierra, and Zafrilla

• **SOCIOECONOMIC INFLUENCE AREA:** formed by the complete surface of the municipalities that contribute territory to the Natural Park and its Peripheral Protection Zone

• **PERIPHERAL PROTECTION ZONE:** Area 2.413 ha

• **LAW DECLARING THE PROTECTED AREA:** Ley 5/2007, de 8 de marzo, declaring Parque Natural de la Serranía de Cuenca

• **OTHER TOOLS TO PROTECT AND RECOGNISE THE PARK:**

– Red Natura 2000 network "ZEC-ZEPA Serranía de Cuenca ES4230014-ES0000092"

– Serranía de Cuenca Astronomical Park, with Starlight Tourist Destination certification

• **PLANNING AND MANAGEMENT:**

• **Plan de Ordenación de los Recursos Naturales (Natural Resources Ordinance Plan PORN),** effective by Decreto 99/2006, declaring the PORN de la Serranía de Cuenca

# PUBLIC USE MAP

# SERRANÍA DE CUENCA

## Natural Park